



### Ala Carte

## Sold by the Pound

ASK A DELI CLERK FOR DETAILS.

Teriyaki Beef	<b>\$8<sup>99</sup></b> lb.
Sweet & Sour Meatballs with Pineapples	<b>\$8<sup>99</sup></b> lb.
Chow Mein Noodles	<b>\$6<sup>99</sup></b> lb.
Pancit Noodles	<b>\$6<sup>99</sup></b> lb.
Chicken Long Rice	<b>\$5<sup>99</sup></b> lb.
Spicy Wings & Drumettes	<b>\$9<sup>29</sup></b> lb.
Korean Style Wings & Drumettes	<b>\$9<sup>79</sup></b> lb.
Regular Wings & Drumettes	<b>\$9<sup>29</sup></b> lb.
Chicken Katsu with Sauce	<b>\$10<sup>99</sup></b> lb.
Orange Chicken	<b>\$10<sup>99</sup></b> lb.
Homemade Potato Macaroni Salad	<b>\$6<sup>59</sup></b> lb.
White Rice	<b>\$1<sup>99</sup></b> lb.
Brown Rice	<b>\$2<sup>49</sup></b> lb.



### Bentos

## Bentos

INCLUDES RICE & FURIKAKE

Small (2 choice) .....	<b>\$5<sup>99</sup></b>
Large (3 choice) .....	<b>\$6<sup>99</sup></b>

PLEASE CALL THE DELI FOR CURRENT CHOICES.



### Other Deli Locations

KTA KEAUHOU, KONA  
KEAUHOU SHOPPING CENTER  
78-6831 ALI'I DRIVE,  
KAILUA-KONA, HAWAII 96740  
(808) 322-2311

KTA WAIMEA, KAMUELA  
WAIMEA CENTER  
65-1158 MAMALAHOA HWY.  
KAMUELA, HAWAII 96743  
(808) 885-8866

KTA WAIKOLOA VILLAGE  
68-3916 PANIOLO AVENUE  
WAIKOLOA VILLAGE, HI 96738  
(808) 883-1088

KTA PUAINAKO, HILO  
50 EAST PUAINAKO STREET  
HILO, HAWAII 96720  
(808) 959-9111

**Kailua-Kona Deli**  
**74-5594 Palani Road,**  
**Kailua-Kona, Hawaii 96740**  
**(808) 329-1677**  
**www.ktasuperstores.com**

*You're Someone Special*



*Quick & Ono*

## Catering Services & Party Platters

**KTA Super Stores**  
**Kailua-Kona Deli**

Daily Hours: 5am to 5pm  
(808) 329-1677

74-5594 Palani Road  
Kailua-Kona, Hawaii 96740

PLEASE PLACE ALL ORDERS AT  
LEAST 3 DAYS IN ADVANCE.



## Platters

### Cold Cuts

ROAST BEEF, CORNED BEEF, PASTRAMI, TURKEY, HAM AND SALAMI

- Small (feeds 15 to 20) ..... **\$50**
- Large (feeds 20 to 25) ..... **\$65**

### Cheese

PROVOLONE, CHEDDAR AND SWISS CHEESE

- Small (feeds 8 to 10) ..... **\$28**
- Large (feeds 11 to 16) ..... **\$36**

### Cold Cuts & Cheese

ROAST BEEF, TURKEY, HAM & CHOICE OF 2: CHEDDAR, SWISS AND PROVOLONE CHEESE

- Small (feeds 10 to 15) ..... **\$45**
- Large (feeds 20 to 25) ..... **\$60**

### Fruit

(BASED ON AVAILABILITY)

- Small (feeds 8 to 10) ..... **\$32**
- Large (feeds 11 to 16) ..... **\$39<sup>50</sup>**

### Vegetables

(BASED ON AVAILABILITY)

- Small (feeds 8 to 10) ..... **\$28**
- Large (feeds 11 to 16) ..... **\$36**

### Roll-Up's

COLD CUTS, CHEESE, SPROUTS, TOMATOES, LETTUCE & TORTILLA WRAP

- Small (4 wraps - cut into 8 pieces) ..... **\$6<sup>39</sup>lb.**
- Large (feeds 11 to 16) ..... **\$6<sup>39</sup>lb.**

### Premium Sandwiches

COLD CUTS WITH DELI BEST WHEAT OR WHITE BREAD, LETTUCE, TOMATOES & MAYO

- Small (4 sandwiches cut in 4 - feeds 10 people) **\$21**
- Large (7 sandwiches cut in 4 - feeds 20 people) **\$29**

### Deluxe Sandwiches

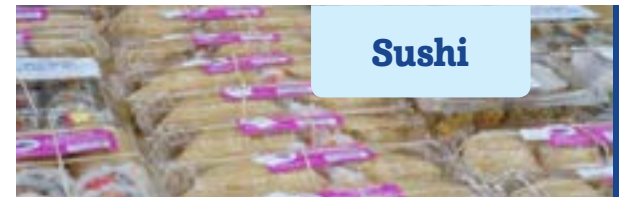
COLD CUTS WITH PUNALU'U SWEET BREAD ROLLS, MAYO CHEESE, LETTUCE, TOMATOES & SPROUTS

- Small (12 rolls - feeds 10 people)..... **\$21**
- Large (24 rolls - feeds 20 people)..... **\$42**

### Relish Tray

SPROUTS, LETTUCE, TOMATOES, ONIONS, MAYO & MUSTARD

- Small (feeds 12 people)..... **\$12**
- Large (feeds 20 people)..... **\$16**



## Sushi

### Maki Sushi

- Uncut..... **\$5<sup>19</sup>** per roll
- Cut (8 pieces)..... **\$5<sup>29</sup>** per roll
- Small Platter (6 cut rolls)..... **\$31<sup>79</sup>**
- Large Platter (12 cut rolls)..... **\$63<sup>49</sup>**

### Cone Sushi

- Small ..... **\$1<sup>17</sup>** each
- 3 Pack ..... **\$3<sup>49</sup>** each
- Small Platter (18 pieces)..... **\$20<sup>99</sup>**
- Large Platter (36 pieces)..... **\$42<sup>09</sup>**

### Sushi Platter Combo

MAKI & CONE SUSHI

- Small (9 small cones & 3 rolls maki)..... **\$26<sup>39</sup>**
- Large (18 small cones & 6 rolls maki)..... **\$52<sup>79</sup>**

Prices are subject to a 4.4386% excise tax. Prices are subject to change. These prices and featured items are valid at KTA Super Stores Kailua-Kona Deli only. Prices effective November 2018.

